



MOUSETALES

TABLE OF CONTENTS:

Page 2.....	Boardrooms
Page 3.....	Messages
Page 4.....	Silver Threads Senior Club/Souris Lions Club
Page 5.....	Newcomers News / Souris Show Hall
Page 6.....	Announcements
Page 7.....	Souris Beach Gateway Park / Businesses
Page 8.....	Harbourview Training Centre / Announcements
Page 9	AED Locations / Emergency Tips
Page 10.....	RCMP Tips & Souris Fire Department
Page 11.....	Mental Health
Page 12.....	Souris Library
Page 13.....	Transportation
Page 14.....	Burning Regulations
Page 15.....	Souris Legion / Announcement
Page 16.....	IWMC News
Page 17.....	Souris Historium
Page 18	C.A.F.E French
Page 19.....	C.A.F.E English
Page 20.....	Local Businesses
Page 21.....	Announcements
Page 22	Announcements
Page 23.....	Local Businesses



FEBRUARY 2026

www.sourispei.com

TOWN OF SOURIS

MOUSETALES



Souris Locator Map / Plan de la ville de Souris



Sights to See / Attractions

- 1 Town Hall / Hôtel de ville
- 2 Souris Day Park Playground / Terrain de jeux Souris Day Park
- 3 St. Mary's Catholic Church / Église catholique St. Mary's
- 4 St. James United Church / Église Unie St. James
- 5 Tennis Courts / Courts de tennis
- 6 Playground / Terrain de jeux
- 7 Elementary School / École élémentaire
- 8 High School / École secondaire
- 9 Souris Co-op / Coopérative Souris
- 10 Town Park / Parc municipal
- 11 St. Alban's Anglican Church / Église anglicane St. Alban's
- 12 Bank / Banque
- 13 Post Office / Bureau de poste
- 14 Credit Union / Caisse d'économie
- 15 Fire Hall / Casernes des pompiers
- 16 Playground / Terrain de jeux
- 17 Ferry Terminal / Terminal du traversier
- 18 French School / École française
- 19 Marina
- 20 Lighthouse / Phare
- 21 Mainstreet Mall / Centre commercial de la rue Principale
- 22 Liquor Store / Magasin d'alcool
- 23 Lighthouse Baptist Church / Église baptiste Lighthouse
- 24 Arena / Arène
- 25 Hospital / Hôpital

Map Legend / Légende

- Confederation Trail / Sentier de la Confédération
- Ferry Route / Trajet du traversier
- Downtown District / Centre-ville
- Residential Area / Zone résidentielle

NOTE The deadline for
MARCH'S Mousetales is
FEBRUARY 20TH before noon.
Send your information to
jroche@sourispei.com

BOARDROOM PLACES

Access PEI - 902-687-7000
Silver Threads Club - 902-687-4380
Harbourview Training Centre - 902-687-3032
St. Mary's Parish Hall - 902-687-2319
Eastern Kings Sportsplex - 902-687-2323
Town Hall Chamber Room - 902-687-2157 Ext. 0
Souris Legion - 902-687-2300



Souris Town Hall Office Hours
Monday- Friday 8:30am - 4:30pm
Contact: town@sourispei.com
902-687-2157



MEET THE TOWN OF SOURIS MAYOR AND YOUR LOCAL MLA FOR DISTRICT 1



Mayor of
Town of Souris

Joanne Dunphy is the Mayor of the Town of Souris and she is honored to serve the Town of Souris. She has lived in this wonderful community for many years and has always been inspired by the resilience, kindness, and spirit of the people who call Souris home. Souris is a vibrant seaside town with a rich history, known for its welcoming nature, stunning coastline, and strong sense of community. The Town of Souris is proud to be the gateway to Îles-de-la-Madeleine, a hub for local businesses, and a place where neighbors still look out for one another. Our town is built on traditions of fishing, farming, and hospitality, but also continues to grow with new opportunities and events that bring people together year after year.

As Mayor, her goal is to listen, support, and work alongside council and residents to make sure Souris continues to thrive. Together, they will focus on community growth, supporting local businesses, improving services, and ensuring that Souris remains a safe, beautiful, and welcoming place to live, work, and visit. I look forward to continuing this journey with you and to celebrating all that makes our town so special.

TOWN OF SOURIS COUNCILORS:

BOYD LEARD - Fire protection, town buildings & properties,
Eastern Kings Sportsplex Rep.

CURTIS LAYBOLT - Streets & sidewalks, Police protection

DAVID JENKINS - Seniors, & Housing

KIM OUTHOUSE - Parks & Recreation, Emergency Measures Operations

REBECCA MACPHEE - Economic development, Tourism, Heritage

STEPHANIE MITSUK - Water & Sewer utility, Info Technology,
Souris Harbour Authority Inc. Rep.



MLA - District 1

Robin's life has been deeply influenced by the people of District 1, Souris-Elmira. He grew up in Souris, attending Souris Regional High School and later graduating from Holland College.

Robin is a small business owner operating Auto Medic, a local automotive services company. He has worked as a primary care paramedic for more than a decade and is also a long time member of the Souris fire department. As a firefighter Robin has braved snow storms and natural disasters to perform wellness checks and render care for seniors.

Robin was elected as the MLA for District 1, Souris-Elmira, on April 3rd, 2023. On February 27, 2025, he was sworn in as Minister of Education and Early Years.

Robin and his wife Mary live in Souris and have three children.

TOWN OF SOURIS



www.sourispei.com

SILVER THREADS SENIORS CLUB



Meetings every 3rd Wed. of each month. No meeting in July or August.

Membership fee \$10 (April to April) Happenings at the club: Bakery

Bingos, Card Games, Crafts, Variety of classes

(Cooking, Exercise, etc.) \$60 Hall Rental available

Call Bonnie at 902-687-4380 to book the hall.



CEILIDHS: (MARCH to DECEMBER) WEDNESDAYS- 7:30 PM - 10:30 PM

Great Local Entertainment -Refreshments provided



Chesapeake Suites presents the 11th ANNUAL BIG ISLAND JIGSAW JAM
NATIONAL PUZZLE DAY JANUARY 29, 2026



Fostering wellness piece by piece

Residents of Chesapeake East & Members of the Silver Threads Seniors Club are invited to take on the challenge of assembling a 1000-piece puzzle as quickly as possible. Teams from all over the island will be working on the identical puzzle, racing for the coveted JIGSAW JAM TROPY and a special prize!



SOURIS LIONS CLUB



members meet the first and third Thursday of each month
@Souris Legion

Visitors are always welcome to attend Souris Lions Club meetings

Contact Arie Hoogerbrugge or email at sourislions@gmail.com

Lions Club Draw
JANUARY'S Winners:



\$500 - Blank

\$100 - J. McQuaid, D. Gallant, C. Laybolt & S. MacCormack

\$50 - J. Lamont, K. Campbell, D. Campbell, Cahill Construction



VALENTINE'S HIGH TEA



Dust off your fancy duds; get out your best dresses, hats, fascinators, suits & ties and join Kings United Pastoral Charge for a Valentine's High Tea on **Saturday, February 7th at 2:00 p.m. at Fortune Hall**. You'll enjoy delicious sandwiches, sweets & a variety of teas and be treated to a fun comedy skit by our very own Kings United Players.

Adults \$25; Children under age 12 \$5.00.

For tickets contact Cathy Williams at 902-969-2292.

LINDEE GALLANT

Community Navigator
for Eastern PEI

Lindee.Gallant@cbdc.ca

Telephone: 902-969-5989

Rachel Buell

Eastern PEI Community Navigator

(P) 902-786-9942

(E) Rachel.Buell@cbdc.ca

**PEI COMMUNITY NAVIGATORS****JOIN OUR REGIONAL FACEBOOK GROUPS**

- ✓ WESTERN PEI COMMUNITY NAVIGATOR
- ✓ CENTRAL PEI COMMUNITY NAVIGATOR
- ✓ EASTERN PEI COMMUNITY NAVIGATOR

544 Main Street,
Montague, PE
COA 1R0

The PEI Community Navigators are here to work with all newcomers and new residents to the rural regions of Western, Central, and Eastern PEI. As you transition into your new life, they are here to answer any questions or concerns you may have, and to open the doors to everything you'll need to know about your new community.

You may be moving here from another country (temporarily or permanently), or even from another province within Canada, either way, we are here to help you!

"Are you new to the Souris area? Would you like to meet people and have some fun? Please join us at St. Mary's Hall (66 Main St., Souris) on Sunday, February 15th from 1:30 - 4:00 p.m. We will have live music from 1:30 - 2:00 and then Bakery Bingo from 2:00 - 4:00 (admission \$2). For more information, contact Angela at (902) 330-3623.

We hope to see you there."



CHECK THE SOURIS SHOW HALL FACEBOOK PAGE FOR UPCOMING SHOWS

"Celebrate **Islander Day** on **February 16th** with us at the Souris Show Hall! We're hosting a fun-filled interactive movie trivia, plus a dance and sing-along that kids will love.

Perfect for ages 4-12!

Stay tuned for more details on the Town of Souris Facebook page!"

Sponsored by the Town of Souris &
Hosted by Souris Show Hall.

**Concerts
begin
at 7:30 PM**



**FREE MOVIES
for SENIORS
every 4th Wednesday
of each month
All movies Start
at 2:30PM.**



FEBRUARY 14, 2026

HAPPY VANLENTINE'S DAY ALL!!





WALKING / HIKING GROUP SCHEDULE

Join us for weekly guided hikes on Tuesdays at
9:30 am sharp!

February 3 - 9474 Northside Road

February 10- Cardigan Trail

February 17- Souris Striders

February 24- Greenwich

March. 3- Brudenell Park Trail

March 10- Fortune

March 17- Naufrage

March 24- Cardigan Trail

March 31- Crowbush



Contact Sara D. for more details at 902-969-1940

Souris Striders Ski Club

All members and supporters welcome!

The Ski Lodge offers trails for classic, skate skiing, and snow shoeing. 6 km North of Souris at Harmony Junction on Rte. 305 Phone: 902-687-1321 Email: sourisski@gmail.com Memberships are available online at sourisstriders.ca, with in-person purchases available once the lodge opens. Stay tuned here for updates on our FB page as soon as conditions allow.



Souris Adult Badminton Club 2025-2026 Season

Wednesday September 17, 2025 to

Wednesday May 27, 2026.

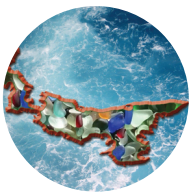


Club plays at Souris Regional School, 15 Longworth Street, Souris from 6:30pm to 8:30pm in the small gym. Our adult club is open to students age 13 and older.

The first two nights are free and membership is only \$30.

Plastic shuttles are supplied. Guests/drop ins are welcome.

Info: Donald Bergeron at dbergeron1104@gmail.com



Discover the Magic of Souris Beach Gateway Park!

Located just steps from the shore, Souris Beach Gateway Park is your one-stop destination for all your family fun!

SEASONAL COMMERCIAL SPACES AVAILABLE FOR LEASE -

- The Poke Shack** – Seasonal commercial space available for lease, featuring lobster, crab, tuna, shrimp, and more options.
- The Jerk Shack** – Fall seasonal commercial space available for lease, featuring jerk pork, savoury sides, and more from the sea!
- The Lobster Shack** – Seasonal commercial space available for lease, specializing in Colville Bay seafood—lobster, crab, and more!
- Blend & Brew Truck** – Seasonal commercial space available for lease, featuring sandwiches, and more!
- The Canadian Food Truck** – Seasonal commercial space available for lease, featuring chicken burgers, and more!
- Beachside Sweet Shop** – Seasonal commercial space available for lease, featuring homemade ice cream, and more!

Charming Shops & Coastal Treasures:

- Red Bandana Creative** – Handpicked gifts, homegrown with East Coast love.
- The Seaglass Shanty** – Gorgeous handcrafted jewelry and gifts made with authentic beach-found seaglass (you can even bring your own and have it made into a keepsake!). Plus, award-winning Oh Fudge Fudge Fudge!
- Locally made crafts, gifts, and more — there's something for everyone!

A Park for All Ages

Enjoy the playground, splash pad, picnic area, gazebo, restrooms, and shower facilities. Plenty of RV parking and wheelchair-accessible paths.

Stroll the boardwalk, dip your toes in the Northumberland Strait, collect seaglass, or just relax and watch the waves roll in.

Create unforgettable moments with your loved ones.

Souris is the Gateway to the Îles de-la-Madeleine Ferry — come early and explore all the beach park has to offer!





28 Church St., Souris, PE
902-687-3032



Bakery

Our kitchen is always busy with both clients and staff creating many different types of goods for our customers. It is one of our busiest programs here at the Harbourview Training Center. Below is a list of baked goods, food and services that we offer through our kitchen.

HTC offers catering (pick up or drop off) to individuals, businesses, groups and events.

Cakes for all occasions decorated specifically for each customer.

We do cinnamon rolls, date squares, cookies and sweet trays. Dinner rolls and biscuits.

Pickles, jams and jellies. Loaves of bread including raisin. Our famous carrot cake.

We appreciate every order placed with our bakery as it assists with this program and others within our center. If you have an event, a business or gathering, we welcome you to contact the Harbourview Training Center kitchen to discuss your food needs.



Woodworking

Harbourview Training Center's woodworking shop is one of our busiest programs. Our clients have the opportunity to learn woodworking skills with the support of Harbourview staff. Clients get to build and create wood products that we sell in our showcase gift shop such as seasonal wood decorative items and hanging directional signs that they can personalize specifically just for you.

Our woodworking shop also accepts custom requests to build benches, picnic tables, frames, shelving and more. One of the busiest sections is our refinishing/refurbishing area. Customers bring in items such as desks, chairs, tables for our clients to refinish so if you need a wood item spruced up or brought back to life, please contact us.



PLACES TO EAT IN THE CORE OF SOURIS:



The Evergreen Cafe
95 Main Street



Red Claw Bistro,
41 Breakwater Street



Souris Legion
56 Main Street

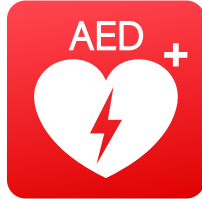


21 Breakwater
Restaurant



Topsy Farmers
120 Main Street

Knowing where to find an AED could save a life!
Automated External Defibrillators (AEDs)
are available at the following
locations in the Town of Souris:



Fiddling Fisherman Lookout - 13 Lower Rollo Bay Rd.

Souris Beach (Summer only)– 8 Main Street

Remedy RX – 51 Main Street

Souris Legion – 56 Main Street

Souris Town Hall – 75 Main Street

Silver Threads Club – 78 Main Street

Main Street Pharmasave – 128 Main Street

Souris Fire Department – 135 Main Street

Home Hardware - 175 Main Street

Eastern Kings Sportsplex – 203 Main Street

Souris Regional School – 15 Longworth Street

Colville Manor – 20 MacPhee Avenue

Souris Hospital – 17 Knights Avenue

Onda – 20 Hope Street

Agra West – 30 Hope Street

Souris Harbour Authority – 118 Breakwater Street

Kingsboro Baptist Church - 3055 East Point Rd. Available 9-7 daily.

The Ski Lodge - 1358 Souris Line Road

 Do you have an AED on site at your business or facility?

If so, we'd love to include you in our community list!

Please contact Jeanne at 902-687-2157

if you'd like us to share that your location has an AED available.

Together we can help ensure everyone knows where to find this lifesaving equipment in an emergency.

Souris Active Transportation Plan

The Town of Souris is developing an Active Transportation Plan to build a more connected, vibrant, and healthy Souris! We have engaged MRSB Consulting to craft a plan based on community input, local needs, and active transportation best practices.

Town member voices will be critical to this plan. MRSB and subconsultant on this project, Coles Associates Ltd., will be engaging residents and organizations throughout the coming months. Keep an eye out for news about a public survey and meeting for the project. The survey is planned for the end of January/early February, and there will be a public meeting at the end of February. We invite you to participate in both the survey and public meeting so you can have your say in the planning process. We look forward to sharing more information about the project soon!



Royal Canadian
Mounted Police



A Note From the RCMP: Outdoor & Recreational Safety

- **Check Ice Thickness:** If engaging in activities on frozen water, use an auger to verify ice thickness. The general rule is at least 20 cm (8 inches) for walking or 25 cm (10 inches) for snowmobiles.
- **Use Proper Equipment:** Wear appropriate safety gear, such as helmets for ATVs or snowmobiles, and ensure gear is functioning properly in the cold.
- **Be Aware of Extreme Cold:** Limit time outside when temperatures or wind chill are extremely low (e.g., -40°C or colder). Avoid overexertion when shoveling snow to reduce the risk of heart attack.
- **Share Your Plan:** Always inform a friend or family member of where you are going, your planned route, and when you expect to return.



SOURIS FIRE DEPARTMENT 135 Main Street



- **Keep fire safety in mind as temperatures drop!**
- The Souris Fire Department is urging everyone to keep fire safety in mind as the temperatures turn colder.
- “People need to pay close attention to potential fire hazards such as fireplaces, furnaces, chimneys and vents, and space heaters.”
- Here are some simple things you can do to stay fire safe during the colder months:
- **Generators and Other Gas Powered Equipment**
- Never run portable generators inside. Always run outdoors, away from windows and a safe distance away from any structures.
- Always use heavier gauge extension cords rated for higher amps than what will be drawn by the appliances you are running.
- Just like generators, never run any gas powered equipment such as snow blowers or chainsaws indoors.
- Never refuel any gas powered equipment inside. Always move the equipment outside into fresh air and away from any structures. If a spill occurs, wait a few minutes to allow the gas spill to evaporate before starting the engine.
- If you have a garage, ensure it has a CO detector installed to notify you of any Carbon Monoxide built up.
- Always store gasoline in approved, well sealed containers. Do Not store near any ignition sources such as pilot lights, electric heaters or furnaces. Always store gas containers in a garage or shed, never in your house.

#FireSafety #SourisFireDept #PEI #FallSafety



Mental Health Counselling in Souris

Caring for your mental health is important any time of year.

Julie Lindsay, licensed Counselling Therapist (CT) and Canadian Certified Counsellor (CCC), continues to accept new clients in Souris. Julie works with individuals, families, couples, and groups. She has years of experience working with children and adolescents, grief and loss, couples/relationships, parenting, anxiety, depression, and trauma. Office hours in Souris have expanded to now include 3 days per week.

You can contact Julie for more information or to arrange a confidential phone meeting at: julielindsaynye@gmail.com



The Souris area Women+ Winter Wellness Group

is a series of weekly gatherings, hosted by volunteers, to support mental health and well-being in the months of shorter days, chilly temps, and decreased activity.

The group will gather on Monday mornings to practice some easy breathwork and meditation, explore evidence-based strategies around strong mental health practices, and offer opportunities to share and support each other.

Eight meetings will be held throughout the months of January, February, and into mid-March, 2026 and have a limit of 12 regular participants. The first meeting will be held on Monday, January 12 from 10:00-11:30am. Your host is Julie Lindsay, CT, CCC, a certified mental health counselor, accompanied by Teri Hall, a yoga and meditation teacher.

There is no cost for this group. For more information or to register for the group, please contact Julie at julielindsaynye@gmail.com

Location TBD



KINGS COUNTY PEER SUPPORT & EDUCATION

572 Main St. Montague

Services We Provide:

- One-on-one mental health support
- Weekly mental health support groups
- Navigating community support • Advocacy
- Education courses, webinars & workshops

Peer support services are free of charge with minimal to no wait list!

For more information about our programs & services, please contact:

(902) 838-2489 or email

m.grant@cmha.pe.ca or ora.ritcey@cmha.pe.ca



SOURIS LIBRARY

3rd FLOOR OF THE SOURIS TOWN HALL

75 MAIN STREET

902-687-2157 Ext. 4

HOURS: TUESDAY 2:00 PM - 6:00 PM

THURSDAY 2:00 PM - 6:00 PM

FRIDAY 10:00 AM - 3:30 PM

SATURDAY 10:00 AM - 3:30 PM

souris@gov.pe.ca



FAMILY STORYTIME
Saturdays @ 11:00 AM

**Enjoy stories, songs, and
rhymes for kids
ages 0-5**



Sticker Making, Ages 6 - 12

Tuesday, February 17th at 3pm

**Join us at the Library to make your very own
stickers - all supplies provided.**



**Did you know that the public libraries also offer
the following items you can borrow:**



- **Ice Skates**
The library's ice skates collection includes hockey and figure skates available in numerous sizes. Refer to the suggested sizing charts (hockey / figure skates) to determine the appropriate size. Please note that sizing is a preference and varies according to skate brand and therefore charts do not guarantee fit. The PEI Public Library Service is not responsible for any injury or damages that may occur during use of skates. The use of a C.S.A. approved helmet is strongly recommended when skating.
- **Snowshoe/Walking Poles**
These poles can be used for activities all year long, including hiking, walking, and snowshoeing.

From story times for toddlers, to technology assistance for seniors, the PEI Public Library Service offers an abundance of FREE programming for all ages.

Check out what is happening at our 25 public libraries today!



TRANSPORTATION EAST INC.

A non-profit organization that provides transportation services to seniors, people with disabilities and low income islanders at affordable rates for individuals living in Eastern PEI.

Contact (902)-380-9277 for more information



TransitPEI



RURAL TRANSIT

Booking Instructions: To ensure you have a seat on the bus please do the following:

1. Click the "Book Seat" button at t3transit.ca/transit-pei-schedules
2. Complete booking
3. Bookings must be made online a minimum of 1 hour before you wish to travel (Bus will not stop unless a booking for that pickup location has been made)

4. Online bookings can be made up to four weeks in advance

Note - Call 902-812-0808 or email bookings@islandtransitpei.ca for any inquiries or booking assistance (during office hours Mon-Fri, 8am - 4pm)

BUS SCHEDULE:

SOURIS TO CHARLOTTETOWN (Morning)

- 5:58 AM - Souris Ferry Terminal
- 6:00 AM - Eastern Kings Sportsplex
- 6:02 AM - Petro Canada Gas Station
- 6:06 AM - Ecole La Belle Cloche (Rollo Bay)
- 6:08 AM - Fortune Ultramar Travel Stop
- 6:10 AM - Dingwells Mills Park & Ride

CHARLOTTETOWN TO SOURIS (Morning)

- 7:45 AM - Confederation Centre Box Office, Queen St
- 7:54 AM - UPEI Bus Shelter, Browns Court
- 8:00 AM - Royalty Crossing Mall Bus Shelter

(Late Afternoon Times)

- 4:00 PM - UPEI Bus Shelter
- 4:10 PM - Shaw Building
- 4:15 PM Confederation Centre Box Office Queen St.
- 4:18 PM - Holland College, Grafton St.
- 4:23 PM - Queen Elizabeth Hospital



If you require a burning permit, you must apply with the Province, the Town of Souris does not issue burning permits for any area of the municipality.

The municipal bylaws for burning are located on the Town of Souris website.

In the Town of Souris, Prince Edward Island, burning regulations are outlined in **By-law No. 85-4: Garbage Burning**. This by-law prohibits individuals from burning or incinerating grass or garbage on any property—commercial, residential, or recreational—without prior written consent from the Town Council and approval from the Fire Chief.

The Fire Chief determines the appropriate type of incinerator to be used for such activities.

Violations of this by-law result in fines: \$50 for the first offence and \$100 for each subsequent offence.

****Additionally, during the wildfire season (March 15 to November 15), provincial regulations require checking daily burning restrictions before any outdoor burning. You can check current restrictions or call 1-800-237-5053.**

<https://www.princeedwardisland.ca/en/feature/burning-restrictions#/service/FireRestrictions>

For more information or to obtain necessary approvals, contact the Town of Souris at 902-687-2157.



Burning permits are not required for Category 1 fires.

Category 1 fire specifications:

Piles no larger than three metres in diameter,

Piles no more than two metres high,

Multiple piles must be at least 10 metres apart from each other,

No more than two piles burning at one time,

Burning of tree limbs, leaves, brush or cut grass is permitted,

Includes campfires* except in licensed private, municipal, and provincial campgrounds, and **Fire must be attended at all times.**

*Campfires are any open fires** that burn no larger than 0.5 metres in diameter and are intended for recreation (and not for survival).

**Open fires are any fires not in an enclosed CSA approved appliance (e.g. propane or charcoal fueled appliances such as BBQs, propane or natural gas fire bowls, and Coleman-style camp stoves).

Chimneys are considered open fires.

Before burning you must check the Burn Restriction Map





SOURIS LEGION

56 Main Street (902) 687-2300
Open 11 AM - 11 PM Monday - Thursday
Open 11 AM - 12 AM Friday & Saturday



Food is served from 11 AM - 7 PM each day, eat in or take out.

Next regular meeting is TUESDAY, FEBRUARY 10th at 7:00 PM

REGULAR EVENTS

Open Crib, Wednesdays at 6:30 PM - Bingo, Mondays at 7:00 PM

Saturday afternoon jam sessions at 2:30 PM

Everyone Welcome!

Saturday evening - Dig for the Deuce - Live music

Tickets available at the Legion, or by e-transfer to

sourislegiondeucetickets@gmail.com

NOTE: VOLUNTEERS ARE NEEDED TO HELP WITH EVENTS.

Food Bank (back door to basement)- Saturday mornings 9AM - 11AM

Buddy Check - 1st & 3rd Tuesday every month at 10 AM

**MEMBERSHIP FEES ARE NOW DUE: ANY NEW MEMBERS WILL GET
THEIR FIRST YEAR FOR FREE.**

**CHECK SOURIS LEGION BRANCH #3 FACEBOOK PAGE FOR FURTHER
DETAILS AND EVENTS.**



**51 Main Street
(902) 687-2013**

Mind and Memory Month

This January, Souris Remedy's is launching Mind and Memory Month in recognition of Alzheimer's Awareness Month, focusing on brain health, caregiving support, and healthy aging.

We'll share weekly themes, practical resources, caregiver aids, and offer medication reviews with our pharmacists throughout the month.

Call us at 902-687-2013 with any questions or to learn more.

We're here to help you and those you love.



ISLAND WASTE MANAGEMENT CORPORATION

Eastern Waste Watch Drop-Off Hours

Dingwells Mills 100 Selkirk Road Rte. 309

Summer & Winter:

Monday 8:00 AM - 4:30 PM,

Wednesday 8:00 AM - 4:30 PM,

Friday 8:00 AM - 4:30 PM

Saturday 8:00 AM - 12:30 PM

CONTACT INFORMATION



Additional sorting guides & calendars can be printed from our website or picked up at any town hall or Access PEI.

WEBSITE: iwmc.pe.ca



recycle coach

PHONE NUMBER: 1-888-280-8111

RECYCLE COACH

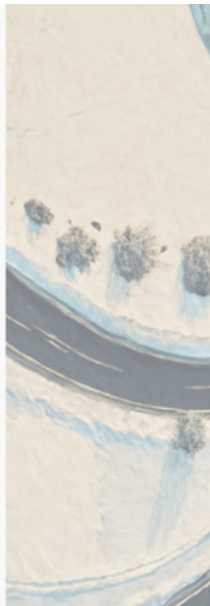
Do you have the RECYCLE COACH APP?

The app is FREE to download on your smart device (mobile phone or tablet) and offers: *Convenient access to collection schedules *Notifications on your smart device to place your carts and recyclables curbside *An easy-to-use interactive sorting guide *And more!

"I Live On A Private Road - What Should I Do?"

Roads must be accessible to collection trucks. If the road is obstructed or not properly cleared, collection cannot take place.

If trucks are unable to access your road, please place your carts and blue bags at the nearest serviceable road by 7:00 AM on your collection day. If you will be placing your material this way, please provide this information to IWMC Customer Service at 1-888-280-8111.



5 Quick Tips For Winter Collection

MATERIAL CURBSIDE BY 7 A.M.

Please don't place out the night before in case it freezes to the ground

PLACE YOUR CART CORRECTLY

The cart wheels should be facing away from the road

IF YOU HAVE QUESTIONS - ASK!

Our Customer Service Team is here to help - give us a call if you have any questions: 1-888-280-8111

MAKE IT VISABLE
Material should not be placed behind or on top of snow banks and should be placed on the right side of the driveway

CHECK FOR CANCELLATIONS

Check for delays and cancellations for collection in your area.
www.iwmc.pe.ca





Souris Cultural Heritage and Genealogy Centre



Located in the Matthew & McLean Building
95 Main Street

The Historium room opens in June.
Step Into the Past at the Souris Historium &
Genealogy Research Room!

Discover the rich tapestry of Souris' heritage!
Come explore fascinating artifacts, captivating local history, and
uncover your family roots at the Souris Historium and
Genealogy Research Room.

Whether you're tracing your family tree, diving into the stories of
our seaside town, or simply curious
about days gone by—there's something here



Located in the Matthew & McLean Building, Souris
Open Monday to Friday, 10:00 AM - 4:30 PM
Will be closed through the end of May.
Bring your family history with a deeper
connection to our community.
History lives here—and so might your story!

The Matthew and McLean building was originally constructed in 1869 in order
to house the then newly formed Matthew and McLean company. Today the
building houses a historical museum with artifacts related to their general
merchant business along with the Visitor's Information Center.





ENGLISH TO FOLLOW ... SOIREE WINGS

TOUSLES VENDREDIS 15h-21h

AU PAVILLON DE L'EST • 861 ROUTE 2, ROLLO BAY (902) 687-7179, poste 2

,...*PRODUITS DE BOULANGERIE DISPONIBLES***

* SERVICES DE BAR DISPONIBLES *** POSSIBILITE DE MANGER SUR PLACE
OU EMPORTER!!

SOUPER COMMUNAUTAIRE GRATUIT

VEUILLEZ L'INSCRIRE A VOTRE CALENDRIER POUR LE MOIS DE FEVRIER, 2026

AU PAVILLON DE L'EST A 861 ROUTE 2 • ROLLOBAY

OFFRE SOUPER COMMUNAUTAIRE GRATUIT REPAS A DETERMINER

MARDI 10 FEVRIER 17 h 00-19 h 00

PROGRAMME DE GYMNASTIQUE

LE KINGS COUNTY GYMNASTICS CLUB PROPOSE UN PROGRAMME DE
GYMNASTIQUE DE 7 SEMAINES

Debutant du Mercredi 25 FEVRIER

Les heures de cours sont de 17h30 a 18h30 (2-6 ans) et de 18h30 a 19h30
(7 ans et plus) Les cours ont lieu au Pavillon de L'est a Rollo Bay - 861 Route 2

Le frais d'Inscription est de 110.00\$

Plus une fois par an (1 sept., 2025 - 31 août, 2026) des frais d'assurance de 40.00\$

Pour s'inscrire ou pour plus d'informations,

Veuillez contacter Darlene Grenier au: cafe.rollobay@gmail.com

OU appelez ou envoyer un message (902) 969-8209

vous PEVEZ vous INSCRIRE A L'AYANCE!!!

FROLIC EN FRANCAIS

Vous avez plus de 50 ans et vous souhaitez participer a une rencontresociale d'une
heure et demie chaque semaine en fran,ais ? La FAOiPE, en partenariat avec la
CAFE, vous accueille tousles Jeudis de 13h a 14h 30 au Pavillon de l'est, situe au
861,route 2, a Rollo Bay. Pour plus d'informatlons, veuillez contacter

Judy Chaissonau (902) 687-2209.

LOCATION D'INSTALLATIONS/DE SALLES



CAFE (comite acadlen et francophone de l'est) OFFRE LA LOCATION DE
SALLE/GVMNASE, etc. a NOTRE INSTALLATION• PAVILLON DE L'EST - 861
ROUTE 2, ROLLO BAY

NOUS LOUONS DES ESPACES POUR DES EVENEMENTS/ACTIVITES TELS QUE DES
REUNIONS, DES ATELIERS, DES ANNIVERSAIRES, DES MARIAGES.

POUR PLUS O'INFORMATIONS, ENVOYEZ UN COURRIEL A DARLENE a:
cafe.rollobay@gmail.com



SOIREE WINGS

EVERY FRIDAY 3 p.m. to 9 p.m.

AT THE PAVILLON DE L'EST • 861 ROUTE 2, ROLLO BAY
(902) 687-7179, ext. 2 *BAKERY ITEMS AVAILABLE*
* BAR SERVICES AVAILABLE* EAT IN OR TAKE OUT!!!

FREE COMMUNITY SUPPER

PLEASE MARK THIS ON YOUR CALENDAR FOR FEBRUARY, 2026
PAVILLON DE L'EST AT 861 ROUTE 2 • ROLLO BAY
IS OFFERING A FREE COMMUNITY SUPPER. (MEAL TBD)
TUESDAY, FEBRUARY 10TH FROM 5:00 p.m.- 7:00 p.m.

PROGRAMME DE GYMNASTIQUE

THE KINGS COUNTY GYMNASTICS CLUB IS OFFERING A 7-WEEK
GYMNASTICS PROGRAM Starting Wednesday, FEBRUARY 25
Class times are from 5:30 p.m. to 6:30 p.m. (ages 2-6) and
from 6:30 p.m. to 7:30 p.m. (ages 7 and up)

Classes are held at the Pavillon de L'est in Rollo Bay - 861 Route 2
Registration fee is \$110.00 plus once a year (September 1, 2025 • August
31, 2026) insurance fee of \$40.00 To register or for more information,
please contact Darlene Grenier at: cafe.rollobay@gmail.com OR call or
send a message to (902) 969-8209 you MUST REGISTER IN ADVANCE!!!

FROLIC EN FRANCAIS

Anyone 50+ years and interested in a 1 1/2 hour social each week in
French? FAOIPE In partnership with CAFE welcomes you every
Thursday from 1:00-2:30 p.m. at the Pavillon de L'est located at 861
Route 2 In Rollo Bay. Contact Judy Chaisson for more information at
(902) 687-2209.

RENTAL OF FACILITY/ROOMS

C.A.F.E (comite acadien et francophone de l'est) OFFERS HALL/GYM
RENTALS, etc. AT OUR FACILITY- PAVILLON DE L'EST • 861 ROUTE 2,
ROLLO BAY. WE RENT SPACES FOR EVENTS/ACTIVITIES SUCH AS
MEETINGS, WORKSHOPS, BIRTHDAY PARTIES, WEDDINGS.

FOR MORE INFORMATION EMAIL DARLENE at:
cafe.rollobay@gmail.com



Go Figure!

Massage Studio



Now Offering
Hot Stone Massage

*Promoting wellness
through massage and motion*

Nancy Cook RMT, CSEP-CPT

175 Main St. Suite 210, Souris
705-229-7729 text preferred
nancy@gofigurefitness.ca

www.gofigurefitness.ca



Souris Co-op
83 Main St. Souris, COA 2B0
ph. 902 687 2723
fax 902 687 2020
HOURS:
Sunday 12 pm - 6 pm
Monday to Friday 8 am – 8 pm
~ Saturday 8 am – 6 pm

ANNOUNCEMENT!!

RURAL MUNICIPALITY OF SOURIS WEST

Will hold a
Public Meeting to Present
the 2026-2027
Financial Plan
on **February 19, 2026**
7:00 p.m. at the
SOURIS ACCESS PEI
BOARDROOM,
15 Green St., Souris PE



Just For You Massage Therapy

Come and be Kneaded

Serving the Community
since 2014

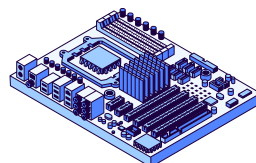
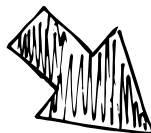
Book online @

Justforyoumassagetherapy.ca
or text 902-208-1105

ACCEPTING NEW CLIENTS!

COMPONENTS BREAK, ELECTRONICS DON'T
BREAK! COME TO THE SOURIS LIBRARY ON
TUESDAYS 3-5 PM

GET YOUR STUFF FIXED
NO MATTER HOW OLD OR NEW!



Planning next steps?
We can help.

Job Searching
Exploring Careers
Funding Options



Free & Confidential

CDS
CAREER DEVELOPMENT
SERVICES INC.

*Funded by the Department of Workforce,
Advanced Learning and Population through
the Canada-PEI Labour Market Agreements.
Souris: 902.687.1526
souris@cdspei.ca
Montague: 902.838.5453
montague@cdspei.ca

To keep up-to-date on community events and news: follow the Town of Souris on Twitter or like us on Facebook.
TOWN of Souris @SourisPE or www.sourispei.com



THE TOWN OF SOURIS DOG LICENSING PROGRAM

runs from June 1 to May 31.



Residents are required to annually register their dogs through this program in person at the Souris Town Hall.

We will need your name, address, phone number, email, the name of your dog(s), the color of the dog(s), the breed, male or female and whether they are spayed or neutered.

Dog tags are \$5 for spayed/neutered dogs and \$10 for non-spayed or non-neutered dogs



The Town of Souris enforces its animal control regulations through the Companion Animal Control By-law 2004-05. This by-law mandates that all dogs residing within the town must be registered and wear a valid dog tag.

These tags are renewable annually and are essential for ensuring that lost pets can be promptly identified and returned to their owners

ARE YOU READY TO QUIT SMOKING or VAPING?

The PEI Smoking Cessation Program is here to help you by covering 100% of the costs of nicotine replacement therapy (NRT) products or prescription cessation medications.

Take the First Step Today! Visit your local pharmacy or Primary Care Network for a consultation.

smokers helpline
1-877-532-3323
smokers@helpline.ca

For more information: Visit princeedwardisland.ca/quitsmoking



Take a Breath
LIVE WELL PEI

PrinceEdwardIsland.ca/QuitSmoking



smokers helpline
1-877-532-3323 smokers@helpline.ca



Break free from smoking and vaping.
Breathe easy and quit today.



114B Main Street, Souris.

Jewellery, fibre and textiles, glass, visual arts, woodwork, photograph



Art Lives Here

Artisans on Main Souris is an artisan cooperative in Souris, PE, featuring exceptional handmade items from local artisans.

We offer quality craftsmanship and unique designs, perfect for any occasion. Beat the winter blahs. **Drop In Craft Nights, Wednesday, Feb. 4th and 18th 6:30 – 8:00 pm.** Bring what you are working on/ or hope to work on, and be creative with others. By donation. Light refreshments will be served.

WITH ARTISANS ON MAIN SOURIS AT TIPSY FARMERS

PAINT & SIP

SUNDAY, FEB 1 | 2:30-4:30PM

JOIN ARTISANS PAULA SHEEHAN & LISA FREEMAN

CREATE YOUR OWN 11X14 CANVAS PAINTING

ALL EXPERIENCE LEVELS WELCOME, ALL MATERIALS PROVIDED

\$40 PER PERSON
(INCLUDES ONE DRINK)

TIPSY FARMERS, SOURIS | 120 MAIN STREET
ARTISANSONMAINSOURIS.COM FOR MORE
INFO OR TO BUY YOUR TICKETS NOW

***More workshops coming soon — stay tuned*

Artisans on Main
SOURIS, PEI
Where Art Lives

TIPSY FARMERS



Evergreen cafe

FALL HOURS

Monday	11am-3pm
Tuesday	9am-3pm
Wednesday	9am-3pm
Thursday	9am-3pm
Friday	9am-6pm

EVERGREEN CAFE

Licensed Cafe & Restaurant located in the heart of Souris PEI. Serving food and drinks with the option of dine-in or take-out.

95 Main Street
902-743-3330



Kelsey MacNeill

Trusted Travel Advisor

kelsey@stewarttravelgroup.ca
902.894.9389 | 1.844.660.7329
cell 902.388.1300

Souris, PEI

Stewart Travel Group

www.stewarttravelgroup.ca
f @KelseyTrustedTravelAdvisor



ANTIQUE & NEW TO YOU FURNITURE SALE

Local senior selling a beautiful selection of furniture - including a love seat, sideboard, dresser with oval mirror, double drop-leaf table, and more. There are various other unique items.

Call 902-687-4560 to arrange a viewing.

Come discover timeless pieces and treasures for your home!





902-330-4243

sourissaues@gmail.com
396 Veterans Memorial
Hwy

Store Fall/Winter Hours:
 Tues.-Sat. 10:00AM-6:00PM
 Delicious, fresh & natural
 Salsas, Mustard Pickles,
 Chow, Pepper Jellies, Sweet
 Jams & Pickles made with
 organically grown
 vegetables & berries grown
 by us in Souris West
"From Seed to Salsa"
 Tantalize your tastebuds!



NEED A RIDE

If you need a drive, local or long distance. i.e. Moncton, Saint John, Charlottetown or Halifax or to doctor's appointments, airport or general travel call Danny at (902) 940-6689

Please don't drink & drive!



Call for Expressions of Interest
 Business Opportunity – E-Bike Rental Partnership

The Town of Souris is inviting **individuals, entrepreneurs, and organizations** to submit expressions of interest to operate a **Seasonal E-Bike Rental Service** in Souris. Location is 209 Main Street, Souris, PE. This opportunity is ideal for someone looking to create or expand a tourism-focused business in Souris.

The Town currently owns **8 Adult E-Bikes** and has a dedicated building equipped with:

- Electrical power and Wi-Fi
- Charging capabilities for E-Bikes
- Locks
- Helmets
- Storage space and bike rack

The successful operator will be responsible for:

- Daily rental operations
- Customer service
- Routine maintenance
- Marketing the service
- Developing rental rates and packages

The Town will provide:

- Access to the building and equipment
- Use of the 8 E-Bikes for rental purposes
- Support in promoting the service through municipal channels



Interested parties are invited to submit:

1. A short business plan or proposal
2. Operating experience (if any)
3. Proposed operating hours and season
4. Rental pricing ideas
5. Any value-added concepts (guided rides, group rates, partnerships, etc.)

Proposals can be submitted to:

Town of Souris, Attn: Shelley LaVie, PO Box 628, 75 Main St., Souris, PE, C0A 2B0 or by email to slavie@sourispei.com Deadline to Submit is March 6, 2026 at 3:00pm

Additional details to be negotiated between the Town of Souris and interested parties.

Disclaimer / Rights Reserved The Town of Souris reserves the right to accept or reject any or all submissions, to negotiate with any proponent, and/or to cancel this opportunity at any time without obligation to any party.



NIC'S SHOE REPAIR & LEATHER CARE



We repair work boots, dress shoes, sandals, sneakers. We also repair leather products such as belts, bags, jackets & more.



Give us a call today!

Items can be picked up or dropped off. Please call before dropping off items. Phone: 902-314-9453

Address: 40 Chapel Avenue, Souris, PE

Souris-PEI MAIN STREET MALL



902-687-3113

175 Main Street Souris, PEI

Souris Office Suites

Proudly
 Supporting
 Events in Our
 Community



902-687-3332

To keep up-to-date on community events and news: follow the Town of Souris on Twitter or like us on Facebook.

TOWN of Souris @SourisPEI or www.sourispei.com